

APEX nuclease (multifunctional DNA repair enzyme) 1 (APEX1), transcript variant 1 (GST)

CATALOG NO.: DDR-11-331

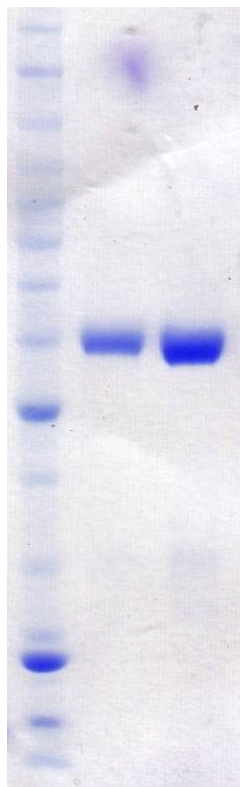
LOT NO.:

DESCRIPTION: Human recombinant APEX1 (residues 1-318; Genbank Accession #NM_001641.3; MW = 62.5 kDa) expressed as an N-terminal GST-fusion protein in *E. coli*.

PURITY: >90% by SDS-PAGE

SUPPLIED AS: $_ \mu\text{g}/\mu\text{L}$ in 50 mM Tris HCl, pH 8.0, 300 mM NaCl, 1 mM EDTA, 1 mM TCEP, 20% glycerol (w/v)

STORAGE: -70°C. Thaw quickly and store on ice before use. The remaining, unused, undiluted protein should be snap frozen, for example in a dry ice ethanol bath or liquid nitrogen. Minimize freeze/thaws if possible, but very low volume aliquots (<5 μl) or storage of diluted enzyme is not recommended.



Coomassie blue-stained SDS-PAGE (12% acrylamide) of 2 μg and 4 μg of RBC APEX1 (GST). MW markers (left) are, from top, 220, 160, 120, 100, 90, 80, 70, 60, 50, 40, 30, 25, 20, 15, 10 kDa.

This product is not intended for therapeutic or diagnostic use in animals or in humans.

Reaction Biology

1 Great Valley Parkway, Malvern PA, USA 19355
requests@reactionbiology.com www.reactionbiology.com

