

L3MBTL1 (His)

CATALOG NO.: RD-11-206

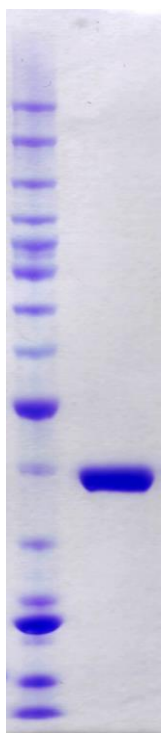
LOT NO.:

DESCRIPTION: Human recombinant L3MBTL1 triple MBT domains (residues 200-522; Genbank Accession # NM_015478; MW = 39.8 kDa) expressed in *E. coli* with an N-terminal His tag.

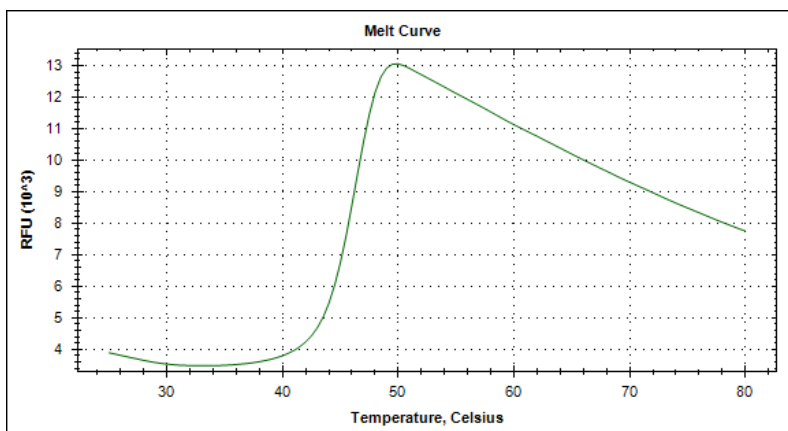
PURITY: >95% by SDS-PAGE

SUPPLIED AS: $\mu\text{g}/\mu\text{L}$ in 50 mM Tris HCl, pH 7.5, 500 mM NaCl, 1 mM TCEP, 10 % glycerol

STORAGE: -70°C. Thaw quickly and store on ice before use. The remaining, unused, undiluted protein should be snap frozen, for example in a dry/ice ethanol bath or liquid nitrogen. Minimize freeze/thaws if possible, but very low volume aliquots (<5 μl) or storage of diluted enzyme is not recommended.



Coomassie blue-stained SDS-PAGE (12% acrylamide) of 5 μg of RBC L3MBTL1 (His). MW markers (left) are, from top, 220, 160, 120, 100, 90, 80, 70, 60, 50, 40, 30, 25, 20, 15, 10 kDa.



Differential Scanning Fluorimetry of RBC L3MBTL1 (His). Thermal denaturation of L3MBTL1 (His) is detected (CFX384TM Touch thermal cycler, 'FRET' channel; Bio- Rad) by increased binding and fluorescence of the dye SYPRO®Orange (Life Technologies). The apo form of L3MBTL1 (His) displays a T_m (inflection point) of 46.5°C.

This product is not intended for therapeutic or diagnostic use in animals or in humans.

Reaction Biology

1 Great Valley Parkway, Malvern PA, USA 19355

requests@reactionbiology.com www.reactionbiology.com