

L3MBTL3 (His)

CATALOG NO.: RD-11-246

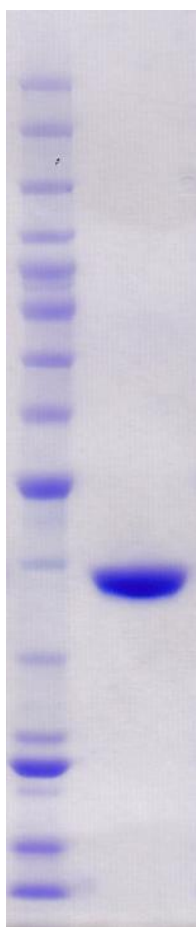
LOT NO.:

DESCRIPTION: Human recombinant L3MBTL3 (residues 229-553; Genbank Accession # NM_032438.2; MW = 39.0 kDa) expressed with a C-terminal His-tag protein in *E. coli*.

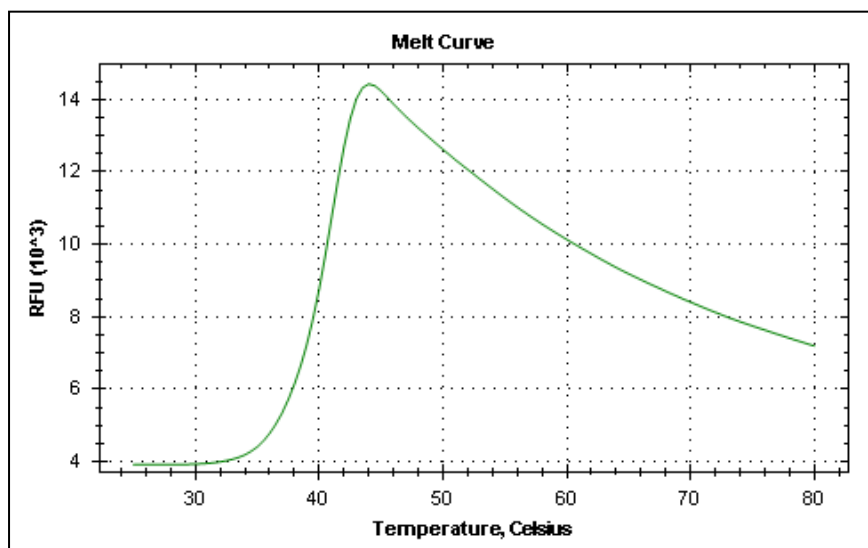
PURITY: >95% by SDS-PAGE

SUPPLIED AS: $\mu\text{g}/\mu\text{L}$ in 50 mM Tris HCl, pH 7.5, 500 mM NaCl, 1 mM TCEP, 10% glycerol as determined by OD₂₈₀.

STORAGE: -70°C. Thaw quickly and store on ice before use. The remaining, unused, undiluted protein should be snap frozen, for example in a dry ice/ethanol bath or liquid nitrogen. Minimize freeze/thaws if possible, but very low volume aliquots (<5 μl) or storage of diluted enzyme is not recommended.



Coomassie blue-stained SDS-PAGE (4-12% acrylamide) of 4 μg of RBC L3MBTL3 (His). MW markers (left) are, from top, 220, 160, 120, 100, 90, 80, 70, 60, **50**, 40, 30, 25, **20**, 15, 10 kDa.



Differential Scanning Fluorimetry of RBC L3MBTL3 (His). Thermal denaturation of L3MBTL3 (His) is detected (CFX384™ Touch thermal cycler, 'FRET' channel; Bio-Rad) by increased binding and fluorescence of the dye SYPRO® Orange (Life Technologies). The apo form of L3MBTL3 (His) displays a T_m of 41.0°C.

This product is not intended for therapeutic or diagnostic use in animals or in humans.

Reaction Biology

1 Great Valley Parkway, Malvern PA, USA 19355

requests@reactionbiology.com www.reactionbiology.com