

CD γ 1-[CHR] (His)

CATALOG NO.: RD-11-414

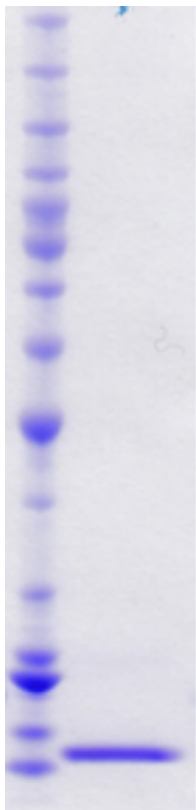
LOT NO.:

DESCRIPTION: Human recombinant CD γ 1-[CHR] (residues 3-66; Genbank Accession # NM_170723.1; MW = 10.4 kDa) expressed as an N-terminal His-tag protein in *E. coli*.

PURITY: >90% by SDS-PAGE

SUPPLIED AS: $_ \mu\text{g}/\mu\text{L}$ in 50 mM Tris HCl, pH 7.5, 500 mM NaCl, 1 mM TCEP, 10% glycerol as determined by OD₂₈₀.

STORAGE: -70°C. Thaw quickly and store on ice before use. The remaining, unused, undiluted protein should be snap frozen, for example in a dry ice/ethanol bath or liquid nitrogen. Minimize freeze/thaws if possible, but very low volume aliquots (<5 μl) or storage of diluted enzyme is not recommended.



Coomassie blue-stained SDS-PAGE (4-12% acrylamide) of 2 μg of RBC CD γ 1-[CHR] (His). MW markers (left) are, from top, 220, 160, 120, 100, 90, 80, 70, 60, **50**, 40, 30, 25, 20, 15, 10 kDa.

This product is NOT intended for therapeutic or diagnostic use in animals or in humans.