

GNMT (Glycine N-Methyltransferase)

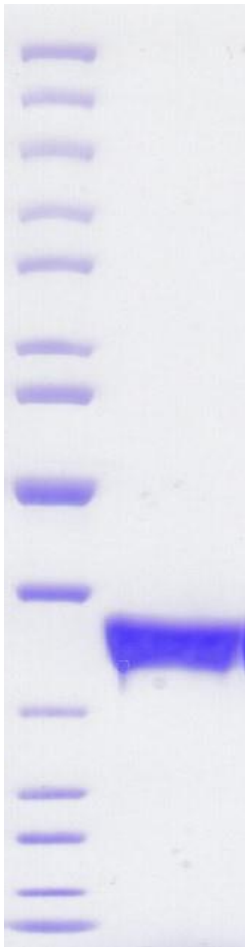
CATALOG NO.: MT-11-669

DESCRIPTION: Human recombinant GNMT (residues 2-295; Genbank Accession # NP_061833.1; MW = 37.5 kDa) expressed with an N-terminal His tag and C-terminal StrepII tag in *E. coli*.

PURITY: > 90% by SDS-PAGE.

SUPPLIED AS: ___µg/µL in 50mM Tris-HCl, pH 7.5, 500mM NaCl, 10% glycerol as determined by OD₂₈₀.

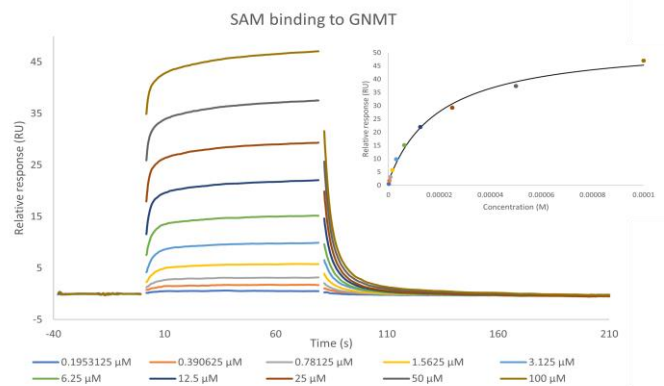
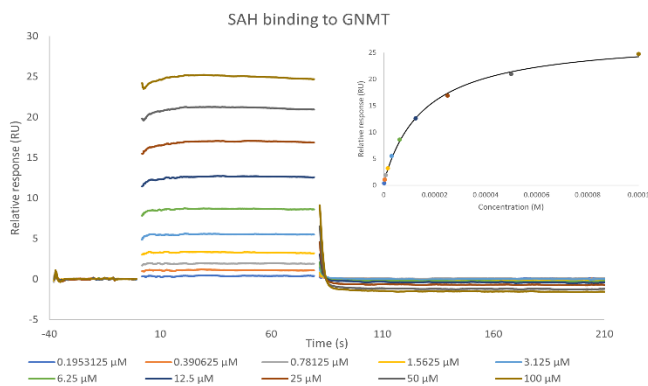
STORAGE: -70°C. Thaw quickly and store on ice before use. The remaining, unused, undiluted protein should be snap frozen, for example in a dry ice/ethanol bath or liquid nitrogen. Minimize freeze/thaws if possible, but very low volume aliquots (<5 µl) or storage of diluted enzyme is not recommended.



Coomassie blue-stained SDS-PAGE (4-12% acrylamide) of 4 µg of RBC GNMT. MW markers (right) are, from top, 160, 120, 100, 90, 80, 70, 60, **50**, 40, 30, 25, 20, 15, 10 kDa.

*Enzymatic activity has not been tested.
 Protein was active in SPR assay (see page 2)*

This product is not intended for therapeutic or diagnostic use in animals or in humans.



Binding Model	Target	Analyte	Chi ² (RU ²)	K _D (M)	R _{max} (RU)	Offset (RU)	Binding Model	Target	Analyte	Chi ² (RU ²)	K _D (M)	R _{max} (RU)	Offset (RU)
Steady state affinity	GNMT	SAH	1.72e-1	1.58e-5	27.4	0.5	Steady state affinity	GNMT	SAM	1.88e+0	1.99e-5	52.7	1.3

Titration of SAH (left) and SAM (right) against immobilized GNMT measured on a Biacore 8K+ in multi-cycle kinetics mode.

This product is not intended for therapeutic or diagnostic use in animals or in humans.

Reaction Biology

1 Great Valley Parkway, Malvern PA, USA 19355

requests@reactionbiology.com www.reactionbiology.com