

JARID1A

(KDM5A, Lysine-specific demethylase 5A)

CATALOG NO.: PDM-21-470

LOT NO.:

DESCRIPTION: Human recombinant JARID1A (residues 2-1690; Genbank Accession # NM_001042603.2; MW = 196.3 kDa) expressed with an N-terminal 6xHis and C-terminal StrepII tags in Sf9 insect cells.

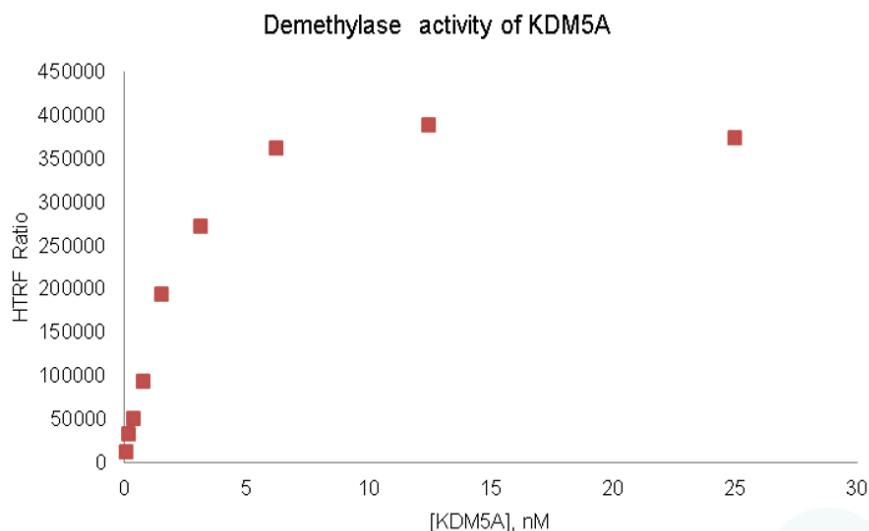
PURITY: > 85% by SDS-PAGE.

SUPPLIED AS: $\mu\text{g}/\mu\text{L}$ in 50 mM Tris HCl, pH 7.5, 300 mM NaCl, 5% glycerol, as determined by OD280

STORAGE: -70°C . Thaw quickly and store on ice before use. The remaining, unused, undiluted enzyme should be refrozen quickly by, for example, snap freezing in a dry ice/ethanol bath or liquid nitrogen. Freezing and storage of diluted enzyme is not recommended.



Coomassie blue-stained SDS-PAGE (4-12% acrylamide) of 4 μg of RBC JARID1A (MW markers (left) are, from top, 220, 160, 120, 100, 90, 80, 70, 60, **50**, 40, 30, 25, **20**, 15, & 10 kDa.



KDM5A Demethylase Activity Assay. B-H3(1-21)K4Me3 peptide demethylation was monitored using Cisbio HTRF detection (cat # 61KA2KAD and 610SAXLA). The 10 μL reaction contained 20 μM Fe(II), 20 μM α -KG, 100 μM ascorbate, 100 nM peptide and variable concentration of KDM5A. The 30 minute reactions were quenched at by the addition of detection reagent. Fluorescence emission (665 and 620 nm) was read using Envision plate reader (Perkin Elmer) following overnight incubation.

This product is not intended for therapeutic or diagnostic use in animals or in humans.

Reaction Biology

1 Great Valley Parkway, Malvern PA, USA 19355

requests@reactionbiology.com www.reactionbiology.com