

KRAS (G12A) (GST)

CATALOG NO.: MSC-11-597

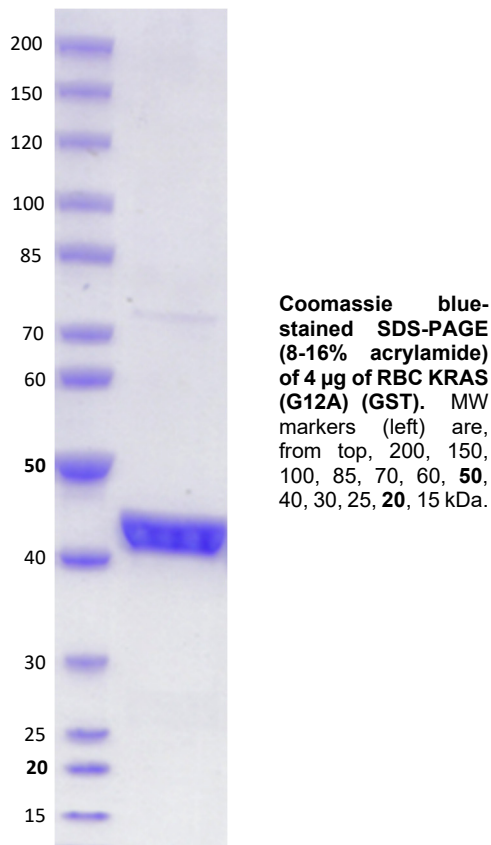
LOT NO.:

DESCRIPTION: Mutant human recombinant KRAS (G12A) with alanine (A) substituted for glycine-12 (G12) (otherwise contains wildtype residues 2-169; Genbank Accession #NP_004976.2; MW = 46.0 kDa) expressed as an N-terminal GST-fusion protein in *E. coli*

PURITY: > 95% by SDS-PAGE.

SUPPLIED AS: ___ µg/µL in 25 mM Tris, pH 8.0, 500 mM NaCl, 5% glycerol, 5mM MgCl₂, 1 mM TCEP as determined by OD₅₉₅.

STORAGE: -70°C. Thaw quickly and store on ice before use. The remaining, unused, undiluted protein should be snap frozen, for example in a dry ice/ethanol bath or liquid nitrogen. Minimize freeze/thaws if possible, but very low volume aliquots (<5 µl) or storage of diluted enzyme is not recommended.



This product is not intended for therapeutic or diagnostic use in animals or in humans.

Reaction Biology

1 Great Valley Parkway, Malvern PA, USA 19355
requests@reactionbiology.com www.reactionbiology.com