

**KRAS (G12C) (GST)**

CATALOG NO.: MSC-11-538

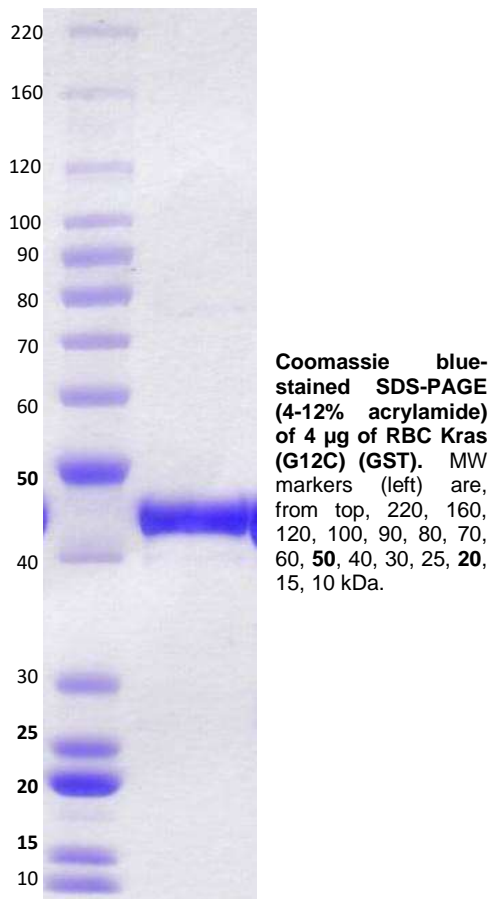
LOT NO.:

**DESCRIPTION:** Mutant human recombinant KRAS (G12C) with cysteine (C) substituted for glycine-12 (G12) (otherwise contains wildtype residues 2-169; Genbank Accession #NP\_004976.2; MW = 46.0 kDa) expressed as an N-terminal GST-fusion protein in *E. coli*.

**PURITY:** >90 % by SDS-PAGE.

**SUPPLIED AS:**  $\mu\text{g}/\mu\text{L}$  in 25 mM Tris, pH 8.0, 100 mM NaCl, 1 mM TCEP, 5% glycerol, 5 mM  $\text{MgCl}_2$  as determined by  $\text{OD}_{595}$ .

**STORAGE:**  $-70^\circ\text{C}$ . Thaw quickly and store on ice before use. The remaining, unused, undiluted protein should be snap frozen, for example in a dry ice/ethanol bath or liquid nitrogen. Minimize freeze/thaws if possible, but very low volume aliquots (<5  $\mu\text{l}$ ) or storage of diluted enzyme is not recommended.



This product is not intended for therapeutic or diagnostic use in animals or in humans.

Reaction Biology

1 Great Valley Parkway, Malvern PA, USA 19355

requests@reactionbiology.com www.reactionbiology.com