

**KRAS (G12C)**
**CATALOG NO.:** MSC-11-530

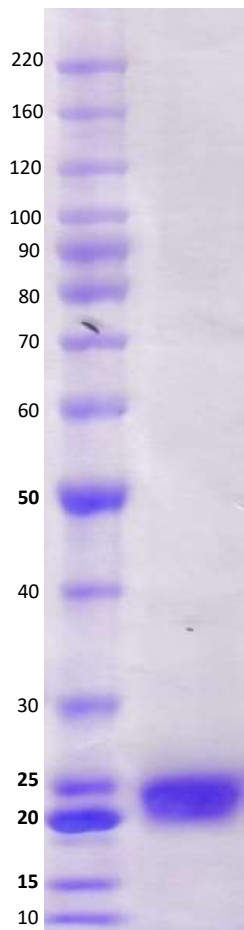
**LOT NO.:**

**DESCRIPTION:** Mutant human recombinant KRAS (G12C) with cysteine (C) substituted for glycine-12 (G12) (otherwise contains wildtype residues 2-169; Genbank Accession #NP\_004976.2; MW = 21.4 kDa) expressed as an N-terminal His-fusion protein in *E. coli*.

**PURITY:** >90 % by SDS-PAGE.

**SUPPLIED AS:** µg/µL in 25 mM Tris, pH 8.0, 100 mM NaCl, 1 mM TCEP, 5 mM MgCl<sub>2</sub> as determined by OD<sub>595</sub>.

**STORAGE:** -70°C. Thaw quickly and store on ice before use. The remaining, unused, undiluted protein should be snap frozen, for example in a dry ice/ethanol bath or liquid nitrogen. Minimize freeze/thaws if possible, but very low volume aliquots (<5 µl) or storage of diluted enzyme is not recommended.



**Coomassie blue-stained SDS-PAGE (4-12% acrylamide) of 4 µg of RBC Kras (G12C).** MW markers (left) are, from top, 220, 160, 120, 100, 90, 80, 70, 60, **50**, 40, 30, 25, **20**, 15, 10 kDa.

This product is not intended for therapeutic or diagnostic use in animals or in humans.

Reaction Biology

1 Great Valley Parkway, Malvern PA, USA 19355

requests@reactionbiology.com www.reactionbiology.com