

**KRAS (G12D) (GST)**

**CATALOG NO.:** MSC-11-539

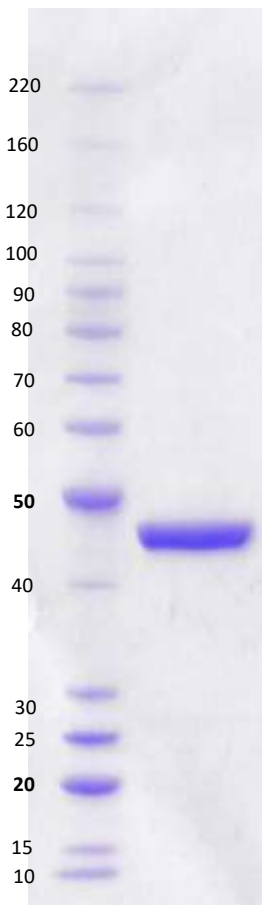
**LOT NO.:**

**DESCRIPTION:** Mutant human recombinant KRAS (G12D) with aspartic acid (D) substituted for glycine-12 (G12) (otherwise contains wildtype residues 2-169; Genbank Accession #NP\_004976.2; MW = 46.0 kDa) expressed as an N-terminal GST-fusion protein in *E. coli*.

**PURITY:** > 90% by SDS-PAGE.

**SUPPLIED AS:** µg/µL in 50 mM Tris, pH 8.0, 100 mM NaCl, 0.25 mM TCEP, 5% glycerol, 1 mM MgCl<sub>2</sub> as determined by OD<sub>595</sub>.

**STORAGE:** -70°C. Thaw quickly and store on ice before use. The remaining, unused, undiluted protein should be snap frozen, for example in a dry ice/ethanol bath or liquid nitrogen. Minimize freeze/thaws if possible, but very low volume aliquots (<5 µl) or storage of diluted enzyme is not recommended.



**Coomassie blue-stained SDS-PAGE (4-12% acrylamide) of 4 µg of RBC KRAS (G12D) (GST).** MW markers (left) are, from top, 220, 160, 120, 100, 90, 80, 70, 60, 50, 40, 30, 25, 20, 15, 10 kDa.

This product is not intended for therapeutic or diagnostic use in animals or in humans.