

KRAS (G12S) (GST)

CATALOG NO.: MSC-11-599

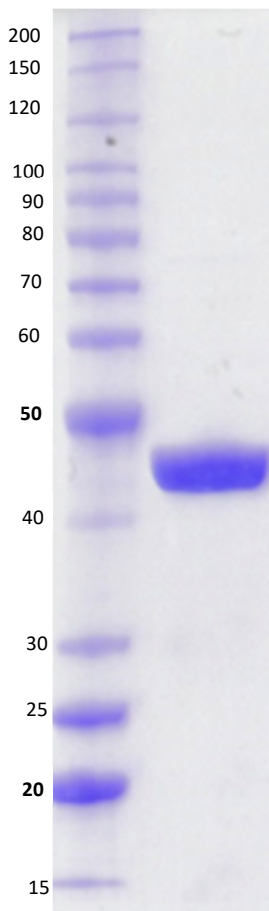
LOT NO.:

DESCRIPTION: Mutant human recombinant KRAS (G12S) with serine (S) substituted for glycine-12 (G12) (otherwise contains wildtype residues 2-169; Genbank Accession #NP_004976.2; MW = 46.0 kDa) expressed as an N-terminal GST-fusion protein in *E. coli*.

PURITY: > 90% by SDS-PAGE.

SUPPLIED AS: ___ µg/µL in 25 mM Tris, pH 8.0, 500 mM NaCl, 2 mM DTT, 5% glycerol, 5 mM MgCl₂ as determined by OD₅₉₅.

STORAGE: -70°C. Thaw quickly and store on ice before use. The remaining, unused, undiluted protein should be snap frozen, for example in a dry ice/ethanol bath or liquid nitrogen. Minimize freeze/thaws if possible, but very low volume aliquots (<5 µl) or storage of diluted enzyme is not recommended.



Coomassie blue-stained SDS-PAGE (8-16% acrylamide) of 4 µg of RBC KRAS (G12S) (GST). MW markers (left) are, from top, 200, 150, 120, 100, 90, 80, 70, 60, **50**, 40, 30, 25, **20**, 15 kDa.

This product is not intended for therapeutic or diagnostic use in animals or in humans.

Reaction Biology

1 Great Valley Parkway, Malvern PA, USA 19355
requests@reactionbiology.com www.reactionbiology.com

