

**Biotinylated KRAS (G12V)**

CATALOG NO.: MSC-11-536

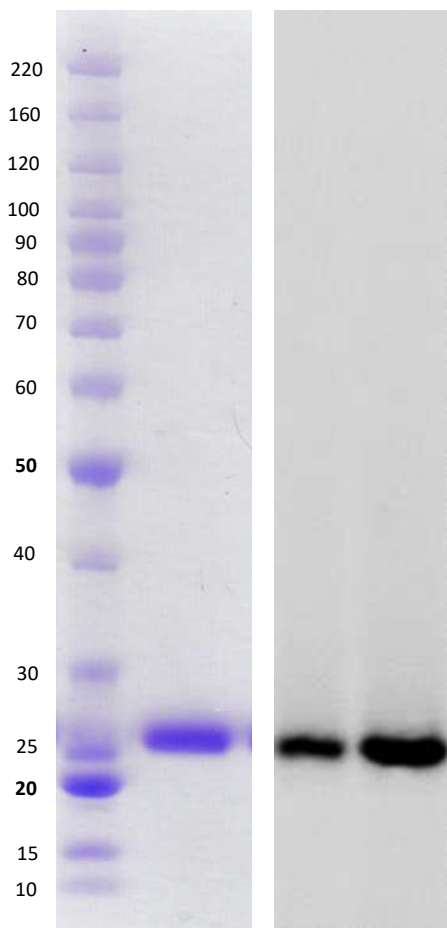
LOT NO.:

**DESCRIPTION:** Mutant human recombinant KRAS (G12V) with valine (V) substituted for glycine-12 (G12) (otherwise contains wildtype residues 2-169; Genbank Accession #NP\_004976.2; MW = 23.8 kDa) expressed as an N-terminal 8xHis-fusion and C-terminal BSP-tag protein in *E. coli*.

**PURITY:** >90% by SDS-PAGE.

**SUPPLIED AS:**  $\mu\text{g}/\mu\text{L}$  in 25 mM Tris, pH 8.0, 100 mM NaCl, 5% glycerol, 1 mM TCEP, 5 mM  $\text{MgCl}_2$  as determined by  $\text{OD}_{595}$ .

**STORAGE:**  $-70^\circ\text{C}$ . Thaw quickly and store on ice before use. The remaining, unused, undiluted protein should be snap frozen, for example in a dry ice/ethanol bath or liquid nitrogen. Minimize freeze/thaws if possible, but very low volume aliquots (<5  $\mu\text{l}$ ) or storage of diluted enzyme is not recommended.



**Coomassie blue-stained SDS-PAGE (4-12% acrylamide) of 4  $\mu\text{g}$  of RBC biotinylated KRAS (G12V).** MW markers of ladder are indicated.

**Western blot** of 0.25 and 0.75  $\mu\text{g}$  biotinylated KRAS (G12V). Biotinylated protein was detected using IRDye 680TL conjugated streptavidin (Licor IRDye690LT 926-68031) and imaged using LI-COR Odyssey Fx.

This product is not intended for therapeutic or diagnostic use in animals or in humans.

Reaction Biology

1 Great Valley Parkway, Malvern PA, USA 19355

requests@reactionbiology.com www.reactionbiology.com