

**KRAS (G13C) (GST)**

**CATALOG NO.:** MSC-11-602

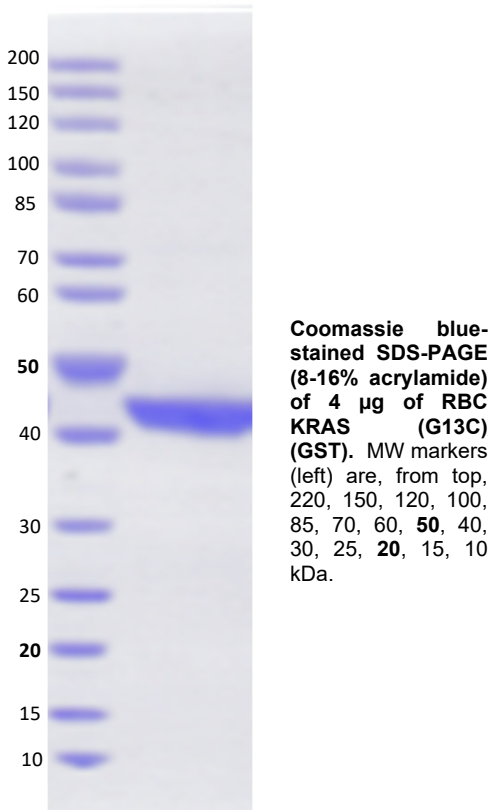
**LOT NO.:**

**DESCRIPTION:** Mutant human recombinant KRAS (G13C) with cysteine (C) substituted for glycine-13 (G13) (otherwise contains wildtype residues 2-169; Genbank Accession #NP\_004976.2; MW = 46.0 kDa) expressed as an N-terminal GST-fusion protein in *E. coli*.

**PURITY:** >95% by SDS-PAGE.

**SUPPLIED AS:** \_\_\_ µg/µL in 25 mM Tris, pH 8.0, 500 mM NaCl, 5% glycerol, 5mM MgCl<sub>2</sub>, 10mM DTT as determined by OD<sub>595</sub>.

**STORAGE:** -70°C. Thaw quickly and store on ice before use. The remaining, unused, undiluted protein should be snap frozen, for example in a dry ice/ethanol bath or liquid nitrogen. Minimize freeze/thaws if possible, but very low volume aliquots (<5 µl) or storage of diluted enzyme is not recommended.



This product is not intended for therapeutic or diagnostic use in animals or in humans.

Reaction Biology

1 Great Valley Parkway, Malvern PA, USA 19355  
requests@reactionbiology.com www.reactionbiology.com