

KRAS (G13D) GST

CATALOG NO.: MSC-11-600

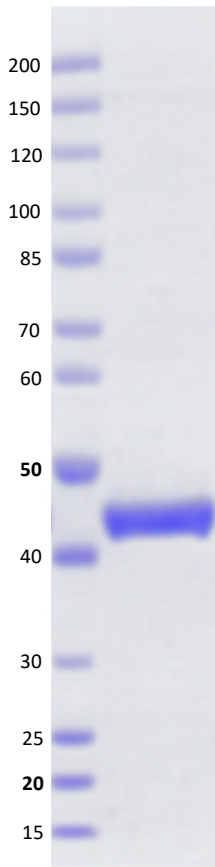
LOT NO.:

DESCRIPTION: Mutant human recombinant KRAS (G13D) with aspartic acid (D) substituted for glycine-13 (G13) (otherwise contains wildtype residues 2-169; Genbank Accession #NP_004976.2; MW = 46.0 kDa) expressed as an N-terminal GST-fusion protein in E. coli.

PURITY: > 90% by SDS-PAGE.

SUPPLIED AS: ___ µg/µL in 50 mM Tris, pH 8.0, 100 mM NaCl, 0.25 mM TCEP, 5% glycerol, 1 mM MgCl₂ as determined by OD₅₉₅.

STORAGE: -70°C. Thaw quickly and store on ice before use. The remaining, unused, undiluted enzyme should be snap frozen, for example in a dry/ice ethanol bath or liquid nitrogen. Minimize freeze/thaws if possible, but very low volume aliquots (<5 µl) or storage of diluted enzyme is not recommended.



Coomassie blue-stained SDS-PAGE (4-12% acrylamide) of 4 µg of RBC KRAS (G13D) GST. MW markers (left) are, from top, 200, 150, 120, 100, 85, 70, 60, 50, 40, 30, 25, 20, 15 kDa.

This product is not intended for therapeutic or diagnostic use in animals or in humans.

Reaction Biology

1 Great Valley Parkway, Malvern PA, USA 19355

requests@reactionbiology.com www.reactionbiology.com

