

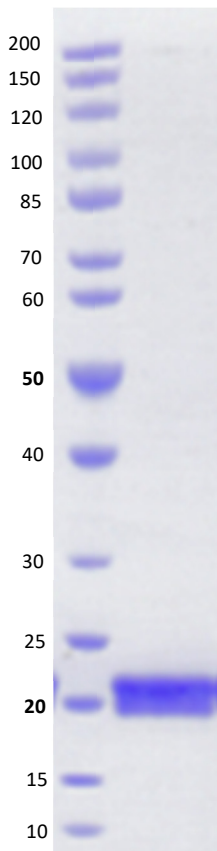
**KRAS (G13D) His****CATALOG NO.:** MSC-11-570**LOT NO.:**

**DESCRIPTION:** Mutant human recombinant KRAS (G13D) with aspartic acid (D) substituted for glycine-13 (G13) (otherwise contains wildtype residues 2-169; Genbank Accession #NP\_004976.2; MW = 21.4 kDa) expressed as an N-terminal His-fusion protein in E. coli.

**PURITY:** > 90% by SDS-PAGE.

**SUPPLIED AS:** \_\_\_ µg/µL in 25 mM Tris, pH 8.0, 500 mM NaCl, 1 mM TCEP, 5 mM MgCl<sub>2</sub> as determined by OD<sub>595</sub>.

**STORAGE:** -70°C. Thaw quickly and store on ice before use. The remaining, unused, undiluted enzyme should be snap frozen, for example in a dry/ice ethanol bath or liquid nitrogen. Minimize freeze/thaws if possible, but very low volume aliquots (<5 µl) or storage of diluted enzyme is not recommended.



**Coomassie blue-stained SDS-PAGE (4-12% acrylamide) of 4 µg of RBC KRAS (G13D).** MW markers (left) are, from top, 200, 150, 120, 100, 85, 70, 60, **50**, 40, 30, 25, **20**, 15, 10 kDa.

This product is not intended for therapeutic or diagnostic use in animals or in humans.

**Reaction Biology**

1 Great Valley Parkway, Malvern PA, USA 19355  
requests@reactionbiology.com www.reactionbiology.com

