

KRAS (wildtype)

CATALOG NO.: MSC-11-529

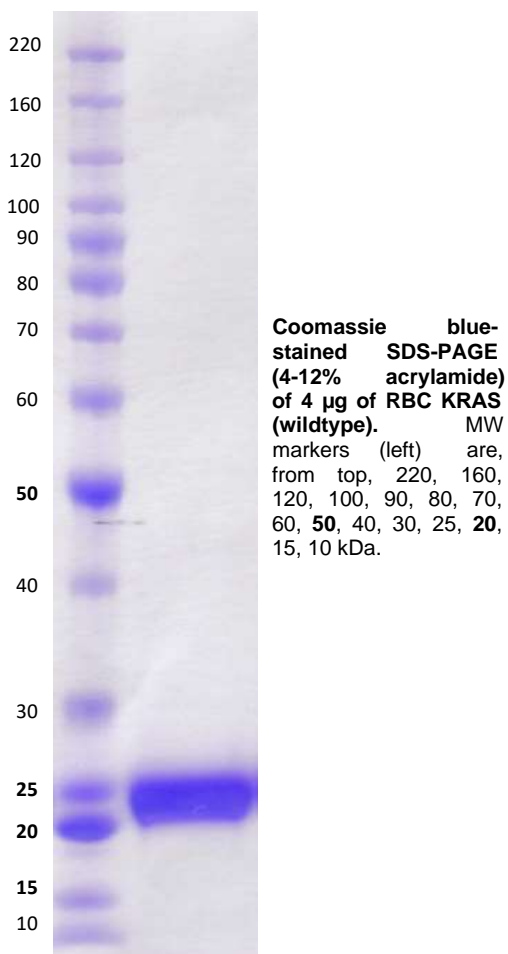
LOT NO.:

DESCRIPTION: Human recombinant KRAS (wildtype) (residues 2-169; Genbank Accession #NP_004976.2; MW = 21.3 kDa) expressed as an N-terminal His-fusion protein in *E. coli*.

PURITY: > 90% by SDS-PAGE.

SUPPLIED AS: $\mu\text{g}/\mu\text{L}$ in 25 mM Tris, pH 8.0, 100 mM NaCl, 1 mM TCEP, 5 mM MgCl_2 as determined by OD_{595} .

STORAGE: -70°C . Thaw quickly and store on ice before use. The remaining, unused, undiluted protein should be snap frozen, for example in a dry ice/ethanol bath or liquid nitrogen. Minimize freeze/thaws if possible, but very low volume aliquots (<5 μl) or storage of diluted enzyme is not recommended.



This product is not intended for therapeutic or diagnostic use in animals or in humans.

Reaction Biology

1 Great Valley Parkway, Malvern PA, USA 19355

requests@reactionbiology.com www.reactionbiology.com