

MBTD1 (GST)

CATALOG NO.: RD-11-415

LOT NO.:

DESCRIPTION: Human recombinant MBTD1 (residues 130-566; Genbank Accession # NM_017643.2; MW = 76.6 kDa) expressed as an N-terminal GST-fusion protein in *E. coli*.

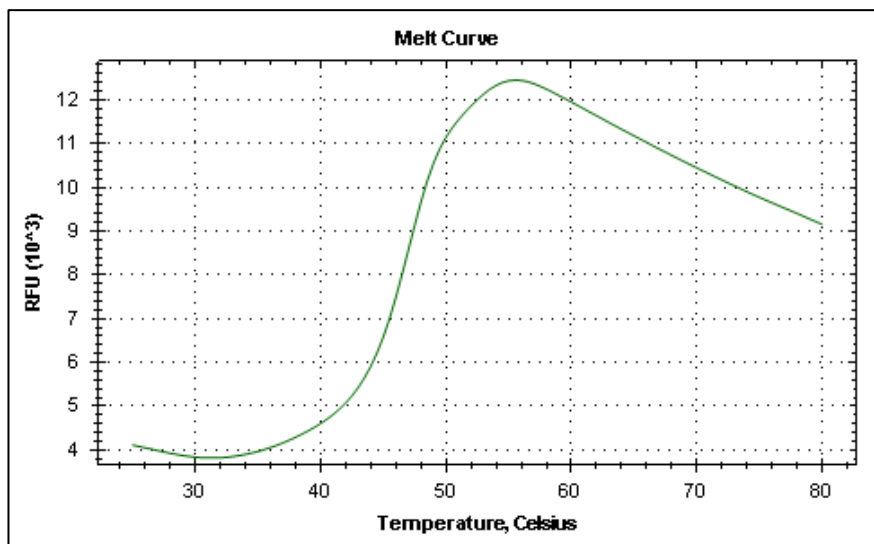
PURITY: >80% by SDS-PAGE

SUPPLIED AS: $_ \mu\text{g}/\mu\text{L}$ in 50 mM Tris HCl, pH 7.5, 500 mM NaCl, 1 mM TCEP, 10% glycerol as determined by OD₂₈₀.

STORAGE: -70°C. Thaw quickly and store on ice before use. The remaining, unused, undiluted protein should be snap frozen, for example in a dry ice/ethanol bath or liquid nitrogen. Minimize freeze/thaws if possible, but very low volume aliquots (<5 μl) or storage of diluted enzyme is not recommended.



Coomassie blue-stained SDS-PAGE (4-12% acrylamide) of 4 μg of RBC MBTD1 (GST). MW markers (left) are, from top, 220, 160, 120, 100, 90, 80, 70, 60, 50, 40, 30, 25, 20, 15, 10 kDa.



Differential Scanning Fluorimetry of RBC MBTD1 (GST). Thermal denaturation of MBTD1 (GST) is detected (CFX384™ Touch thermal cycler, 'FRET' channel; Bio-Rad) by increased binding and fluorescence of the dye SYPRO® Orange (Life Technologies). The apo form of MBTD1 (GST) displays a T_m of 47.0°C.

This product is not intended for therapeutic or diagnostic use in animals or in humans.

Reaction Biology

1 Great Valley Parkway, Malvern PA, USA 19355

requests@reactionbiology.com www.reactionbiology.com