

METTL3/METTL14

CATALOG NO.: MT-22-655

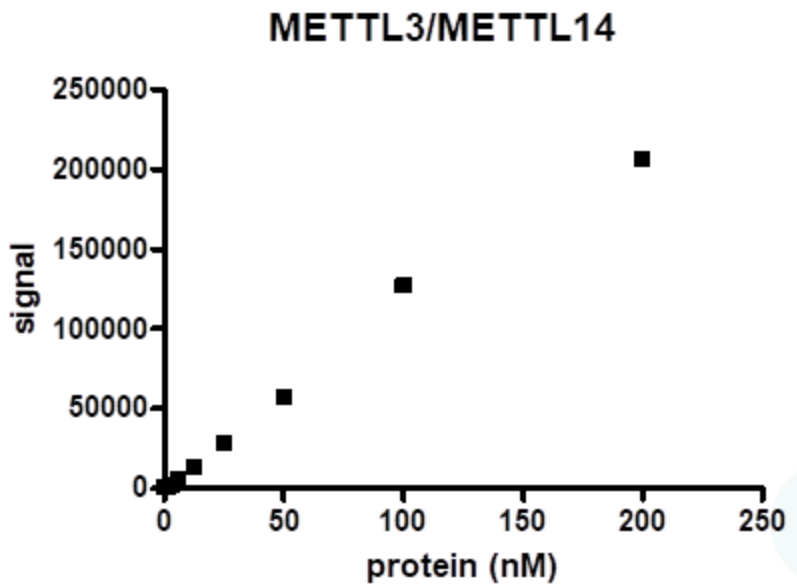
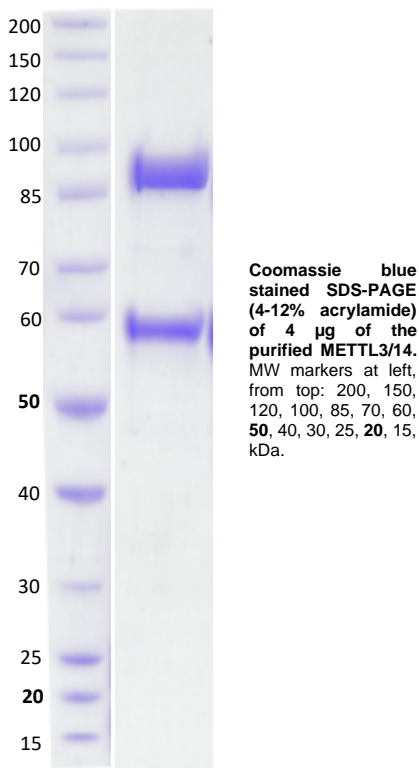
LOT NO.:

DESCRIPTION: Recombinant RNA methyltransferase complex comprising of full-length human recombinant METTL3 (residues 2-580; GenBank Accession No. NP_062826.2; MW = 92.6 kDa) in complex with full-length human recombinant METTL14 (1-456; GenBank Accession No. NP_066012.1; 55.4 kDa), total MW = 148.0kDa, co-expressed in an insect cell/baculovirus expression system. METTL3 incorporates an N-terminal GST-TEV tag and C-terminal StrepII tag. METTL14 incorporates an N-terminal 6xHis-TEV tag.

PURITY: > 95% by SDS-PAGE

SUPPLIED AS: 0.95 mg/mL in 50mM Tris-HCl (pH 7.5), 500mM NaCl, 10% glycerol, 0.25mM TCEP as determined by OD₂₈₀.

STORAGE: -70°C. Thaw quickly and store on ice before use. The remaining, unused, undiluted enzyme should be snap frozen, for example in a dry ice/ethanol bath or liquid nitrogen. Minimize freeze/thaws if possible, but very low volume aliquots (<5 µl) or storage of diluted solutions is not recommended.



Activity of METTL3/METTL14 in HotSpot methyltransferase assay. 1 h reactions were performed in the presence 1 µM ³H-SAM, 0.5 µM ssRNA oligo substrate and variable complex concentration.

This product is not intended for therapeutic or diagnostic use in animals or in humans.

Reaction Biology

1 Great Valley Parkway, Malvern PA, USA 19355

requests@reactionbiology.com www.reactionbiology.com