

PNMT (Phenylethanolamine N-methyltransferase)

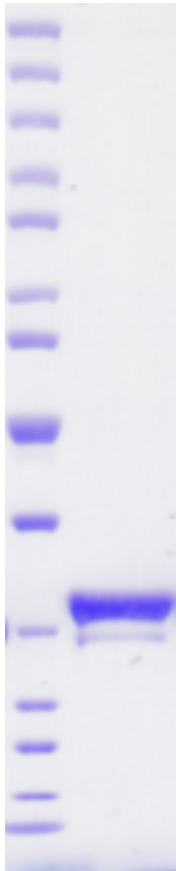
CATALOG NO.: MT-11-672

DESCRIPTION: Human recombinant PNMT (residues 2-282; Genbank Accession # NP_002677.1; MW = 35.6 kDa) expressed with an N-terminal His tag and C-terminal StrepII tag in E. coli.

PURITY: > 90% by SDS-PAGE.

SUPPLIED AS: ___µg/µL in 50mM Tris-HCl, pH 7.5, 500mM NaCl, 10% glycerol as determined by OD₂₈₀.

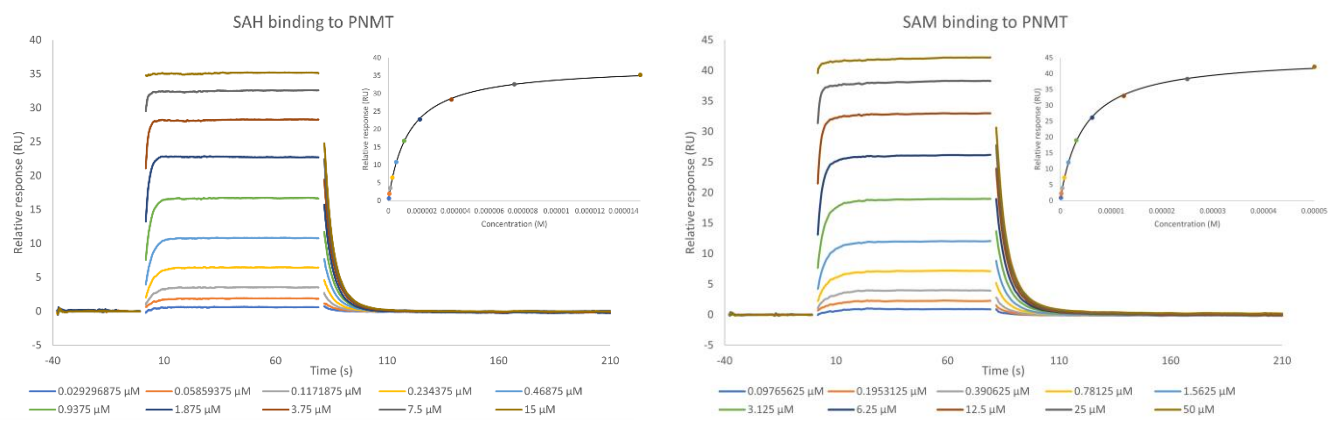
STORAGE: -70°C. Thaw quickly and store on ice before use. The remaining, unused, undiluted protein should be snap frozen, for example in a dry ice/ethanol bath or liquid nitrogen. Minimize freeze/thaws if possible, but very low volume aliquots (<5 µl) or storage of diluted enzyme is not recommended.



Coomassie blue-stained SDS-PAGE (4-12% acrylamide) of 4 µg of RBC PNMT. MW markers (right) are, from top, 220, 160, 120, 100, 90, 80, 70, 60, **50**, 40, 30, 25, **20**, 15, 10 kDa.

*Enzymatic activity has not been tested.
Protein was active in SPR assay (see page 2)*

This product is not intended for therapeutic or diagnostic use in animals or in humans.



Binding Model	Target	Analyte	Chi ² (RU ²)	K _D (M)	R _{max} (RU)	Offset (RU)	Binding Model	Target	Analyte	Chi ² (RU ²)	K _D (M)	R _{max} (RU)	Offset (RU)
Steady state affinity	PNMT	SAH	7.17e-2	1.21e-6	37.7	0.1	Steady state affinity	PNMT	SAM	1.17e-1	4.58e-6	45.1	0.4

Titration of SAH (left) and SAM (right) against immobilized PNMT measured on a Biacore 8K+ in multi-cycle kinetics mode.

This product is not intended for therapeutic or diagnostic use in animals or in humans.