

SCML2 (His)

CATALOG NO.: RD-11-405

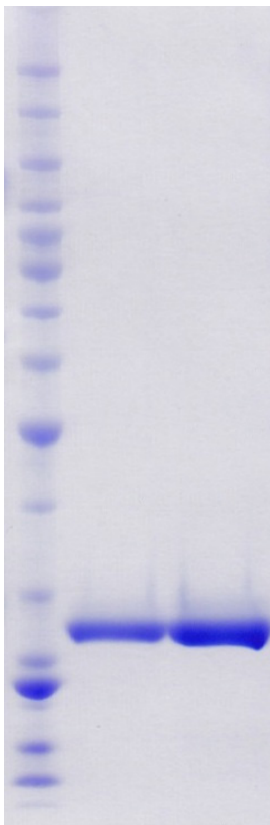
LOT NO.:

DESCRIPTION: Human recombinant SCML2 (residues 29-243; Genbank Accession # NM_006089.2; MW = 26.3 kDa) expressed as an N-terminal His-tag protein in *E. coli*.

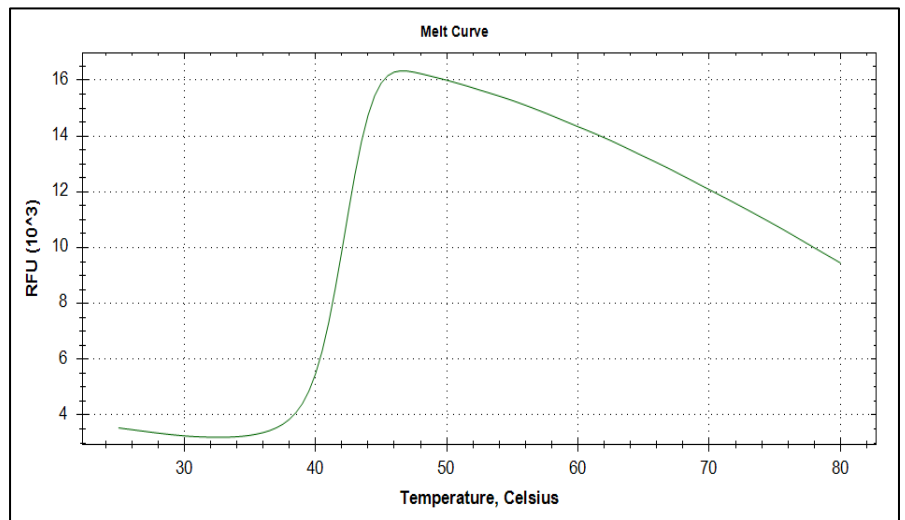
PURITY: >95% by SDS-PAGE

SUPPLIED AS: $\mu\text{g}/\mu\text{L}$ in 50 mM Tris HCl, pH 7.5, 500 mM NaCl, 1 mM TCEP, 10% glycerol as determined by OD₂₈₀.

STORAGE: -70°C. Thaw quickly and store on ice before use. The remaining, unused, undiluted protein should be snap frozen, for example in a dry ice/ethanol bath or liquid nitrogen. Minimize freeze/thaws if possible, but very low volume aliquots (<5 μl) or storage of diluted enzyme is not recommended.



Coomassie blue-stained SDS-PAGE (4-12% acrylamide) of 4, 8 μg of RBC SCML2 (His). MW markers (left) are, from top, 220, 160, 120, 100, 90, 80, 70, 60, 50, 40, 30, 25, 20, 15, 10 kDa.



Differential Scanning Fluorimetry of RBC SCML2 (His). Thermal denaturation of SCML2 (His) is detected (CFX384™ Touch thermal cycler, 'FRET' channel; Bio-Rad) by increased binding and fluorescence of the dye SYPRO® Orange (Life Technologies). The apo form of SCML2 (His) displays a T_m of 42.0°C.

This product is not intended for therapeutic or diagnostic use in animals or in humans.

Reaction Biology

1 Great Valley Parkway, Malvern PA, USA 19355
 requests@reactionbiology.com www.reactionbiology.com