

SOS1

CATALOG NO.: MSC-11-502

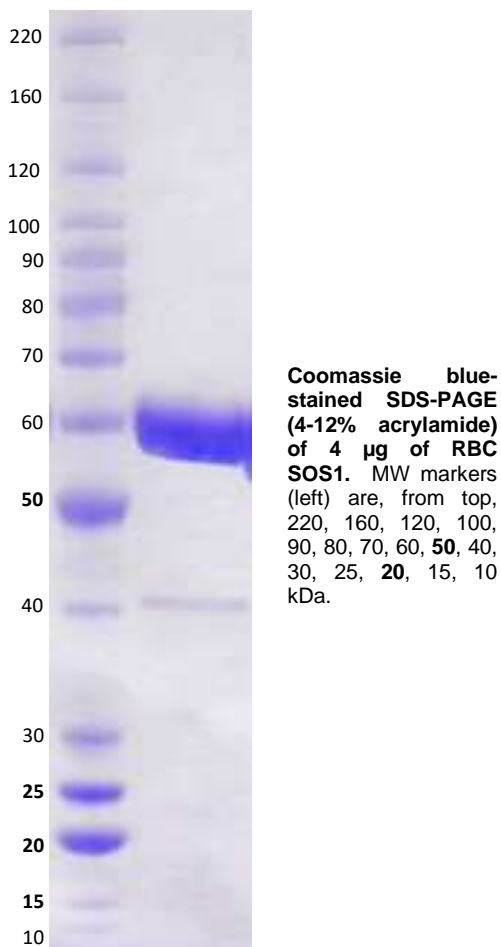
LOT NO.:

DESCRIPTION: Human recombinant SOS1 (residues 564-1049; Genbank Accession #NP_005624.2; MW = 59.34 kDa) expressed as a C-terminal StrepII-fusion protein in *E. coli*.

PURITY: >90 % by SDS-PAGE.

SUPPLIED AS: µg/µL in 25 mM Tris-HCl, pH 7.5, 150 mM NaCl, 0.5 mM TCEP, 5 mM MgCl₂, 5% glycerol as determined by OD₂₈₀

STORAGE: -70°C. Thaw quickly and store on ice before use. The remaining, unused, undiluted protein should be snap frozen, for example in a dry ice/ethanol bath or liquid nitrogen. Minimize freeze/thaws if possible, but very low volume aliquots (<5 µl) or storage of diluted enzyme is not recommended.



This product is not intended for therapeutic or diagnostic use in animals or in humans.

Reaction Biology

1 Great Valley Parkway, Malvern PA, USA 19355
requests@reactionbiology.com www.reactionbiology.com