

SOS2

CATALOG NO.: MSC-11-527

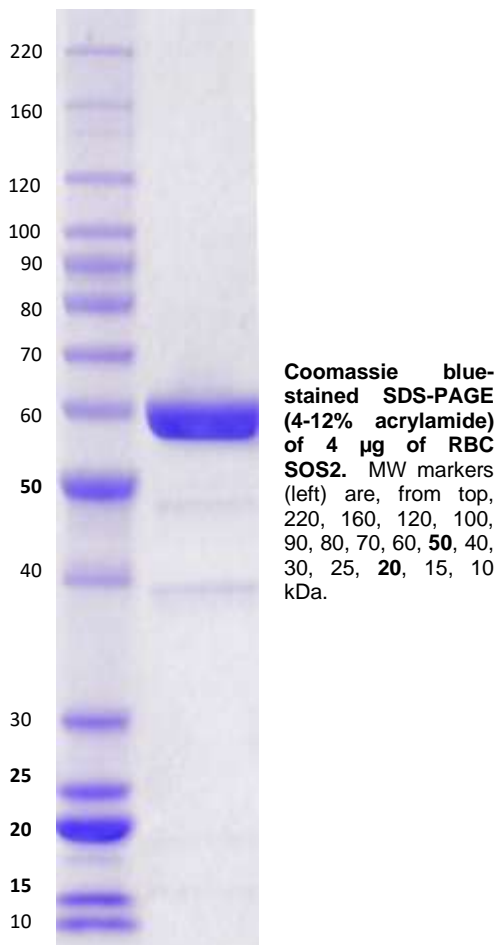
LOT NO.:

**DESCRIPTION:** Human recombinant SOS2 (residues 562-1047; Genbank Accession #NP\_006939.4; MW = 59.29 kDa) expressed as a C-terminal StrepII-fusion protein in *E. coli*.

**PURITY:** >90 % by SDS-PAGE.

**SUPPLIED AS:**  $\mu\text{g}/\mu\text{L}$  in 25 mM Tris-HCl, pH 7.5, 150 mM NaCl, 0.5 mM TCEP, 5 mM  $\text{MgCl}_2$ , 5% glycerol as determined by  $\text{OD}_{280}$

**STORAGE:**  $-70^\circ\text{C}$ . Thaw quickly and store on ice before use. The remaining, unused, undiluted protein should be snap frozen, for example in a dry ice/ethanol bath or liquid nitrogen. Minimize freeze/thaws if possible, but very low volume aliquots (<5  $\mu\text{l}$ ) or storage of diluted enzyme is not recommended.



This product is not intended for therapeutic or diagnostic use in animals or in humans.

Reaction Biology

1 Great Valley Parkway, Malvern PA, USA 19355  
requests@reactionbiology.com www.reactionbiology.com