

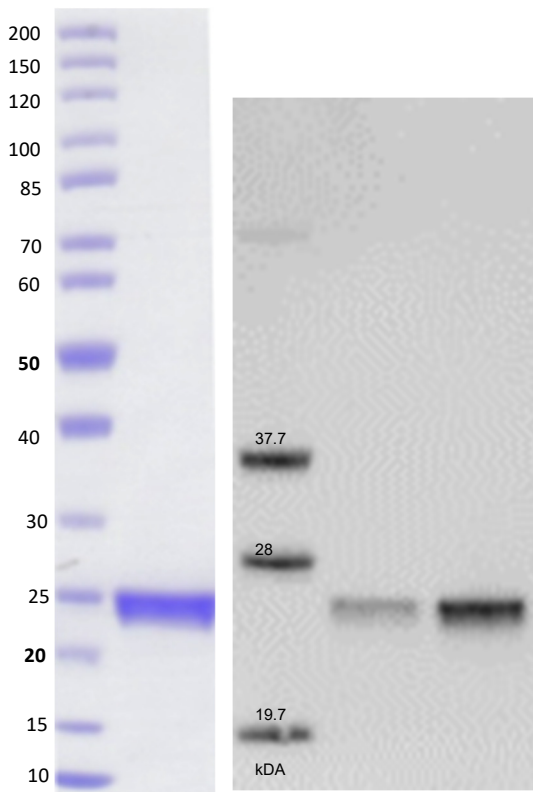
Biotinylated KRAS (G13D)**CATALOG NO.:** MSC-11-563**LOT NO.:**

DESCRIPTION: Mutant human recombinant KRAS (G13D) with aspartic acid (D) substituted for glycine-13 (G13) (otherwise contains wildtype residues 2-169; Genbank Accession #NP_004976.2; MW = 23.8 kDa) expressed as an N-terminal 8xHis-fusion and C-terminal BSP-tag protein in *E. coli*.

PURITY: > 90% by SDS-PAGE.

SUPPLIED AS: ___ µg/µL in 25 mM Tris, pH 8.0, 500 mM NaCl, 5% glycerol, 1 mM TCEP, 5 mM MgCl₂ as determined by OD₅₉₅.

STORAGE: -70°C. Thaw quickly and store on ice before use. The remaining, unused, undiluted enzyme should be snap frozen, for example in a dry/ice ethanol bath or liquid nitrogen. Minimize freeze/thaws if possible, but very low volume aliquots (<5 µl) or storage of diluted enzyme is not recommended.



Coomassie blue-stained SDS-PAGE (4-12% acrylamide) of 4 µg of RBC biotinylated KRAS (G13D). MW markers of ladder are 200, 150, 120, 100, 85, 70, 60, 50, 40, 30, 25, 20, 15, 10 kDa.

Western blot of 0.25 and 0.75µg biotinylated KRAS (G13D). Biotinylated protein was detected using IRDye 680TL conjugated streptavidin (Licor IRDye690LT 926-68031) and imaged using LI-COR Odyssey Fx.

This product is not intended for therapeutic or diagnostic use in animals or in humans.

Reaction Biology

1 Great Valley Parkway, Malvern PA, USA 19355

requests@reactionbiology.com www.reactionbiology.com