

**s-COMT (V108M) (His)**

(Soluble Catechol-O-Methyltransferase)

CATALOG NO.: MT-11-357

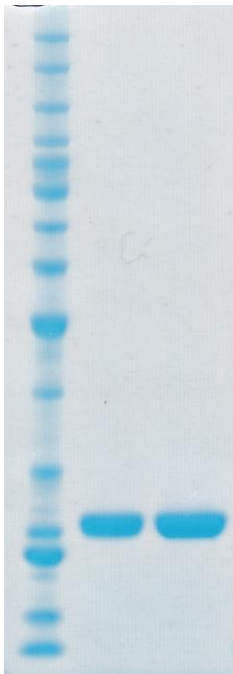
LOT NO.:

**DESCRIPTION:** Human recombinant s-COMT with methionine (M) in place of valine (V108) (residues 2-221; Genbank Accession # NM\_007310; MW = 26.2 kDa) expressed with a C-terminal His tag in *E. coli*.

**PURITY:** >95% by SDS-PAGE

**SUPPLIED AS:**  $\mu\text{g}/\mu\text{L}$  in 50 mM Tris HCl, pH 7.5, 150 mM NaCl, 1 mM TCEP, 10% glycerol

**STORAGE:** -70°C. Thaw quickly and store on ice before use. The remaining, unused, undiluted protein should be snap frozen, for example in a dry ice ethanol bath or liquid nitrogen. Minimize freeze/thaws if possible, but very low volume aliquots (<5  $\mu\text{l}$ ) or storage of diluted enzyme is not recommended.



**Coomassie blue-stained SDS-PAGE (12% acrylamide) of 2 and 4  $\mu\text{g}$  of RBC s-COMT (V108M).** MW markers (left) are, from top, 220, 160, 120, 100, 90, 80, 70, 60, **50**, 40, 30, 25, **20**, 15, 10 kDa.

This product is not intended for therapeutic or diagnostic use in animals or in humans.

Reaction Biology

1 Great Valley Parkway, Malvern PA, USA 19355

requests@reactionbiology.com www.reactionbiology.com