

LARG

CATALOG NO.: MSC-11-693

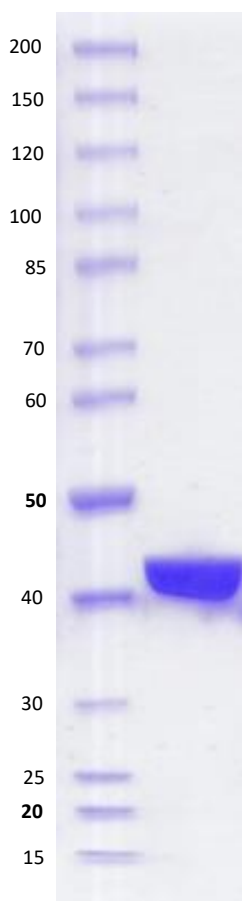
LOT NO.:

**DESCRIPTION:** Human recombinant LARG (residues 765–1138; Genbank Accession # NM\_015313.3; MW = 45.8 kDa) expressed as a C-terminal StrepII-fusion protein in *E. coli*

**PURITY:** > 90% by SDS-PAGE.

**SUPPLIED AS:** \_\_\_ µg/µL in 25 mM Tris-HCl, pH 7.5, 150 mM NaCl, 0.5 mM TCEP, 5 mM MgCl<sub>2</sub>, 5% glycerol as determined by OD<sub>280</sub>.

**STORAGE:** -70°C. Thaw quickly and store on ice before use. The remaining, unused, undiluted protein should be snap frozen, for example in a dry ice/ethanol bath or liquid nitrogen. Minimize freeze/thaws if possible, but very low volume aliquots (<5 µl) or storage of diluted enzyme is not recommended.



**Coomassie blue-stained SDS-PAGE (4-12% acrylamide) of 4 µg of RBC LARG.** MW markers (left) are, from top, 200, 150, 120, 100, 85, 70, 60, **50**, 40, 30, 25, **20**, 15 kDa.

This product is not intended for therapeutic or diagnostic use in animals or in humans.

Reaction Biology

1 Great Valley Parkway, Malvern PA, USA 19355

requests@reactionbiology.com www.reactionbiology.com

